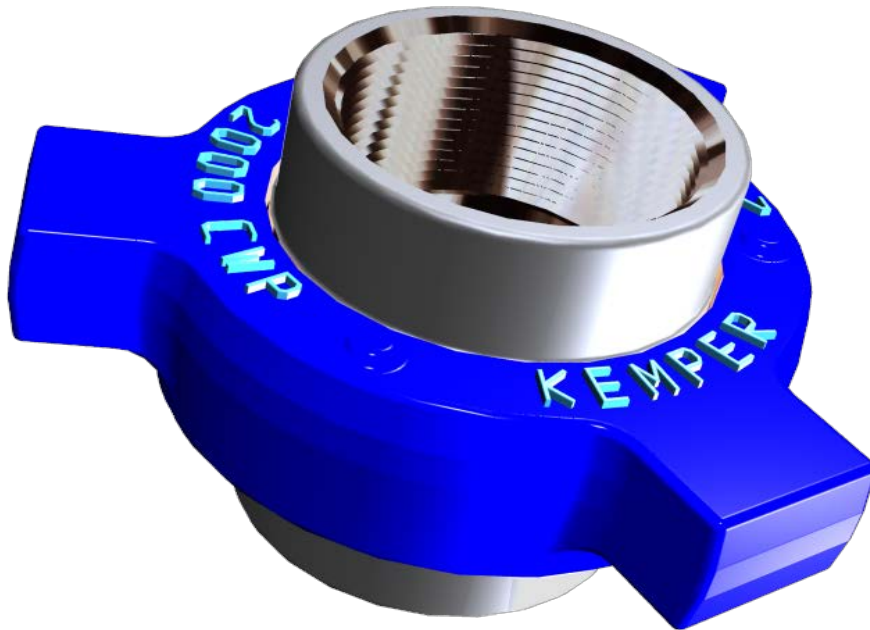


ORFIELD UNIONS



PRICE LIST

Prepared February 23rd, 2019 at 3:27am CDT.
Prices valid until 3/25/2019
Currency: USD



Manufacturing Headquarters
3001 Darrell Road
Island Lake, IL 60042
phone: 847-526-2166
toll free: 800-323-1659
fax: 847-526-2241

Pennsylvania Sales & Service Center
111 Arrowhead Drive
Slippery Rock, PA 16057
phone: 724-790-4990
fax: 724-738-0172

National Sales Headquarters
12343 Cutten Road
Houston, TX 77066
phone: 281-781-2730
toll free: 800-231-2724
fax: 281-781-2731

Rocky Mountain Sales & Service Center
1423 4th Avenue
Grand Junction, CO 81501
phone: 970-609-5845
fax: 970-609-5839

Mid-Continent Sales & Service Center
2733 Industrial Drive
Sulphur, OK 73086
phone: 580-247-9623
toll free: 888-533-3722
fax: 580-622-2058

Canadian Sales & Service Center
8001 Edgar Industrial Ave
Red Deer, AB T4P3S2
phone: 587-404-0459
fax: 403-348-0873

West Texas Sales & Service Center
1000 W 2nd St
Odessa, TX 79763
phone: 432-301-9990
fax: 432-301-9991

South Texas Sales & Service Center
1391 County Road 429
Pleasanton, TX 78064
phone: 210-446-5863
fax: 830-569-8236

TABLE OF CONTENTS

			Page				Page
Figure 100	1000 psi cwp	threaded ends	1	Figure 602	6000 psi cwp	butt weld sch xxh	14
Figure 101	1000 psi cwp	8 rnd eue threads	1	Figure 1002	10,000 psi cwp	threaded ends	15
Figure 200	2000 psi cwp	threaded ends	2	Figure 1002	10,000 psi cwp	butt weld sch 160	16
Figure 200	2000 psi cwp	butt weld sch 40	3	Figure 1002	10,000 psi cwp	butt weld sch xxh	16
Figure 200	2000 psi cwp	butt weld sch 80	4	Figure 1002	7500 psi cwp	combination ends	16
Figure 206	2000 psi cwp	threaded ends	5	Figure 1003	10,000 psi cwp	threaded ends	17
Figure 206	2000 psi cwp	butt weld sch 40	6	Figure 1003	7500 psi cwp	threaded ends	17
Figure 206	2000 psi cwp	butt weld sch 80	7	Figure 1003	10,000 psi cwp	butt weld sch 160	17
Figure 201	2000 psi cwp	threaded ends	8	Figure 1003	7500 psi cwp	butt weld sch xxh	17
Figure 201	3000 psi cwp	8 rnd eue threads	8	Figure 1502	15,000 psi cwp	threaded ends & nps	18
Figure 211	2000 psi cwp	threaded ends	8	Figure 1502	15,000 psi cwp	butt weld sch 160	19
Figure 207	2000 psi cwp	threaded ends	9	Figure 1502	15,000 psi cwp	butt weld sch xxh	19
Figure 207	2000 psi cwp	butt weld sch 40	9	Figure 2002	20,000 psi cwp	butt weld	20
Figure 207	2000 psi cwp	butt weld sch 80	9	Figure "G"	6000 psi cwp	threaded ends	20
Figure 300	2000 psi cwp	threaded ends	10	Viton Seal Rings			20
Figure 400	4000 psi cwp	threaded ends	10	Viton O'Rings			20
Figure 400	2500 psi cwp	butt weld sch 80	10				
Figure 402	4000 psi cwp	threaded ends	11				
Figure 600	6000 psi cwp	threaded ends	11				
Figure 602	6000 psi cwp	threaded ends	12				
Figure 602	6000 psi cwp	butt weld sch 80	13				
Figure 602	6000 psi cwp	butt weld sch 160	14				

GENERAL INFORMATION

PAYMENT TERMS:

Net 30 days

Seller reserves the right to place a service or interest charge on past due accounts at the highest rate permitted by law.

OTHER TERMS:

Product prices and materials of construction are subject to change without notice.

FREIGHT:

All prices apply FOB point of manufacture, Houston, Texas, or nearest available field stock.

Full freight allowed to domestic rail point or truck terminal nearest destination on shipments of 500 pounds or more.

Full freight allowed for 500 pounds or more within western Canada if shipped from our Red Deer Alberta warehouse.

MINIMUM ORDER:

Minimum invoice is twenty-five dollars (\$25.00), excluding transportation and taxes.

NOTE:

All assembly and part weights are approximate.

Price list is not inclusive of all oilfield unions and parts offered. Please consult sales office for complete information.

figure 100 - 1000 psi cwp* - 1500 psi test
threaded ends black nut / yellow subs

		PART NUMBER	WEIGHT POUNDS	CARTON QUANTITY	PRICE
2"	UNION	010200	6	15	30.94
	NUT	010293	3		26.42
	MALE SUB	010201	1.4		12.90
	FEMALE SUB	010202	1.9		16.12
2 1/2"	UNION	012500	11.1	8	93.24
	NUT	012593	5.5		35.88
	MALE SUB	012501	2.5		31.15
	FEMALE SUB	012502	3.1		37.86
3"	UNION	010300	12.85	6	82.52
	NUT	010393	6.1		49.19
	MALE SUB	010301	4		40.46
	FEMALE SUB	010302	4.5		45.08
4"	UNION	010400	22.5	3	116.48
	NUT	010493	10.4		80.91
	MALE SUB	010401	7.3		60.37
	FEMALE SUB	010402	6.8		70.30
5"	UNION	010500	32.7	2	365.04
	NUT	010593	12.6		172.43
	MALE SUB	010501	9.7		203.58
	FEMALE SUB	010502	10.4		236.96
6"	UNION	010600	47.1	1	325.68
	NUT	010693	17.8		135.30
	MALE SUB	010601	13.2		160.16
	FEMALE SUB	010602	16.2		187.10
8"	UNION	010800	67.4	1	608.61
	NUT	010893	24.4		234.31
	MALE SUB	010801	19.1		251.16
	FEMALE SUB	010802	24.1		303.94

figure 101 - 8 RND EUE - 1000 psi cwp* - 1500 psi test
union with O'Ring beige nut / yellow subs

5"	UNION	100550	37.9	2	504.56
	NUT	010593	12.6		172.43
	MALE SUB	100551	11.9		293.23
	FEMALE SUB WITH O'RING	100555	13.5		342.78
	O'RING	100594	0.2		17.21

*cwp is cold working pressure

figure 200 - 2000 psi cwp* - 3000 psi test
threaded ends blue nut / gray subs

		PART NUMBER	WEIGHT POUNDS	CARTON QUANTITY	PRICE
1"	UNION	020100	2	40	22.62
	NUT	020193	1.1		15.13
	MALE SUB	020101	0.4		8.42
	FEMALE SUB	020102	0.5		12.53
1 1/4"	UNION	021200	2.5	20	80.81
	NUT	021293	1.3		44.04
	MALE SUB	021201	0.5		30.94
	FEMALE SUB	021202	0.6		40.77
1 1/2"	UNION	021500	3.2	20	103.84
	NUT	021593	1.7		45.34
	MALE SUB	021501	0.7		40.04
	FEMALE SUB	021502	0.865		51.27
2"	UNION	020200	5.6	15	31.36
	NUT	020293	3.1		30.06
	MALE SUB	020201	1.3		16.64
	FEMALE SUB	020202	1.6		21.42
2 1/2"	UNION	022500	10.5	6	143.83
	NUT	022593	5.8		74.20
	MALE SUB	022501	2		62.40
	FEMALE SUB	022502	2.6		90.74
3"	UNION	020300	14.2	6	144.82
	NUT	020393	6.7		77.22
	MALE SUB	020301	3.5		123.55
	FEMALE SUB	020302	4.1		64.01
4"	UNION	020400	19	4	172.07
	NUT	020493	7.4		79.20
	MALE SUB	020401	5.3		83.93
	FEMALE SUB	020402	6.3		109.88
5"	UNION	020500	40.2	4	649.74
	NUT	020593	17.6		292.24
	MALE SUB	020501	9.8		316.16
	FEMALE SUB	020502	12.7		344.71
6"	UNION	020600	47.2	1	635.75
	NUT	020693	18.3		346.11
	MALE SUB	020601	12.7		326.09
	FEMALE SUB	020602	17.2		393.07
8"	UNION	020800	67.7	1	826.23
	NUT	020893	22.6		443.92
	MALE SUB	020801	19.4		423.64
	FEMALE SUB	020802	25.6		509.24
10"	UNION	021000	94.2	1	1,269.06
	NUT	021093	33.3		688.22
	MALE SUB	021001	27.7		650.47
	FEMALE SUB	021002	33.134		935.48



**figure 200 - 2000 psi cwp* - 3000 psi test
butt weld schedule 40 blue nut / gray subs**

		PART NUMBER	WEIGHT POUNDS	CARTON QUANTITY	PRICE
2"	UNION	020210	5.9	15	158.55
	NUT	020293	3.1		30.06
	MALE SUB	020211	1.3		92.82
	FEMALE SUB	020212	1.5		119.29
2 1/2"	UNION	022510	11.3	6	473.98
	NUT	022593	5.8		74.20
	MALE SUB	022511	2.3		156.42
	FEMALE SUB	022512	2.7		179.24
3"	UNION	020310	14.5	6	305.34
	NUT	020393	6.7		77.22
	MALE SUB	020311	3.7		143.31
	FEMALE SUB	020312	4.1		179.45
4"	UNION	020410	19.5	4	429.62
	NUT	020493	7.4		79.20
	MALE SUB	020411	4.7		190.89
	FEMALE SUB	020412	6.4		249.96
5"	UNION	020510	40.8	4	856.18
	NUT	020593	17.6		292.24
	MALE SUB	020511	10.3		472.68
	FEMALE SUB	020512	12.9		501.33
6"	UNION	020610	49.1	1	899.03
	NUT	020693	18.3		346.11
	MALE SUB	020611	13.9		519.79
	FEMALE SUB	020612	16.1		680.99
8"	UNION	020810	70.1	1	1,153.00
	NUT	020893	22.6		443.92
	MALE SUB	020811	21.3		665.08
	FEMALE SUB	020812	26.1		872.51
10"	UNION	021010	102.6	1	1,787.55
	NUT	021093	33.3		688.22
	MALE SUB	021011	33.6		1,031.73
	FEMALE SUB	021012	35.7		1,351.90

*cwp is cold working pressure

2 1/2" available - Price on Request



figure 200 - 2000 psi cwp* - 3000 psi test
butt weld schedule 80 blue nut / gray subs

		PART NUMBER	WEIGHT POUNDS	CARTON QUANTITY	PRICE
2"	UNION	020220	6.2	15	217.52
	NUT	020293	3.1		30.06
	MALE SUB	020221	1.5		116.38
	FEMALE SUB	020222	1.6		142.90
2 1/2"	UNION	022520	11.4	6	795.60
	NUT	022593	5.8		74.20
	MALE SUB	022521	2.6		297.44
	FEMALE SUB	022522	2.9		306.80
3"	UNION	020320	15.4	6	364.26
	NUT	020393	6.7		77.22
	MALE SUB	020321	4.2		166.87
	FEMALE SUB	020322	4.5		203.01
4"	UNION	020420	21	4	488.54
	NUT	020493	7.4		79.20
	MALE SUB	020421	6.6		214.50
	FEMALE SUB	020422	7		273.52
5"	UNION	020520	44	4	915.15
	NUT	020593	17.6		292.24
	MALE SUB	020521	12.1		496.24
	FEMALE SUB	020522	14.3		524.89
6"	UNION	020620	52.9	1	958.00
	NUT	020693	18.3		346.11
	MALE SUB	020621	16.6		543.40
	FEMALE SUB	020622	18		705.74
8"	UNION	020820	77.7	1	1,211.91
	NUT	020893	22.6		443.92
	MALE SUB	020821	26.6		688.64
	FEMALE SUB	020822	29.5		896.12
10"	UNION	021020	118.3	1	1,846.52
	NUT	021093	33.3		688.22
	MALE SUB	021021	43		1,055.34
	FEMALE SUB	021022	42		1,375.45

2 1/2" available - Price on Request

figure 206 - 2000 psi cwp* - 3000 psi test
union with O'Ring threaded ends blue nut / gray subs

		PART NUMBER	WEIGHT POUNDS	CARTON QUANTITY	PRICE
1"	UNION	260100	1.9	60	56.47
	NUT	260193	1.1		26.94
	MALE SUB WITH O-RING	260104	0.55		26.94
	O-RING	260194	0.1		5.46
See Figure 200 for Female Sub Specifications and Price					
1 1/4"	UNION	261200	2.5	20	115.49
	NUT	261293	1.3		44.46
	MALE SUB WITH O-RING	261204	0.5		59.07
	O-RING	261294	0.1		4.63
1 1/2"	UNION	261500	3.2	20	105.04
	NUT	261593	1.7		45.34
	MALE SUB WITH O-RING	261504	0.75		52.47
	O-RING	261594	0.1		4.63
2"	UNION	260200	5.9	15	80.13
	NUT	260293	3.107		30.84
	MALE SUB WITH O-RING	260204	1.3		40.46
	O-RING	260294	0.15		5.93
2 1/2"	UNION	262500	10.4	6	244.87
	NUT	262593	5.8		94.28
	MALE SUB WITH O-RING	262504	2.25		107.07
	O-RING	262594	0.15		6.14
3"	UNION	260300	14.2	6	159.95
	NUT	260393	6.7		77.22
	MALE SUB WITH O-RING	260304	3.4		62.30
	O-RING	260394	0.2		5.93
4"	UNION	260400	18.8	4	215.33
	NUT	260493	7.4		200.36
	MALE SUB WITH O-RING	260404	5.2		91.62
	O-RING	260494	0.2		5.93
6"	UNION	260600	46.9	1	842.45
	NUT	260693	18.3		324.32
	MALE SUB WITH O-RING	260604	13.25		337.58
	O-RING	260694	0.25		17.21
8"	UNION	260800	67.2	1	1,502.80
	NUT	260893	22.6		422.03
	MALE SUB WITH O-RING	260804	19		-
	O-RING	260894	0.25		23.71
10"	UNION	261000	93.6	1	1,564.52
	NUT	261093	33.3		826.80
	MALE SUB WITH O-RING	261004	27.5		675.58
	O-RING	261094	0.3		33.23

*cwp is cold working pressure

2 1/2" & 5" available - Price on Request

figure 206 - 2000 psi cwp* - 3000 psi test
union with O'Ring blue nut / gray subs
butt weld schedule 40

		PART NUMBER	WEIGHT POUNDS	CARTON QUANTITY	PRICE
2"	UNION	260210	5.8	15	186.26
	NUT	260293	3.107		30.84
	MALE SUB WITH O-RING	260214	1.3		93.34
	FEMALE SUB	020212	0.5		119.29
	O-RING	260294	0.15		5.93
2 1/2"	UNION	262510	10.8	6	256.78
	NUT	262593	5.8		94.28
	MALE SUB WITH O-RING	262514	2.3		146.43
	FEMALE SUB	022512	2.7		179.24
	O-RING	262594	0.15		6.14
3"	UNION	260310	14.4	6	328.80
	NUT	260393	6.7		77.22
	MALE SUB WITH O-RING	260314	3.6		112.79
	FEMALE SUB	020312	4.1		179.45
	O-RING	260394	0.2		5.93
4"	UNION	260410	19.4	4	461.50
	NUT	260493	7.4		200.36
	MALE SUB WITH O-RING	260414	5.6		155.32
	FEMALE SUB	020412	6.4		249.96
	O-RING	260494	0.2		5.93
6"	UNION	260610	47.9	1	1,192.36
	NUT	260693	18.3		324.32
	MALE SUB WITH O-RING	260614	13.6		514.75
	FEMALE SUB	020612	16.1		680.99
	O-RING	260694	0.25		17.21
8"	UNION	260810	69.6	1	1,873.25
	NUT	260893	22.6		422.03
	MALE SUB WITH O-RING	260814	20.9		900.85
	FEMALE SUB	020812	26.1		872.51
	O-RING	260894	0.25		23.71
10"	UNION	261010	102.1	1	2,305.32
	NUT	261093	33.3		826.80
	MALE SUB WITH O-RING	261014	33.1		1,095.12
	FEMALE SUB	021012	35.7		1,351.90
	O-RING	261094	0.3		33.23

*cwp is cold working pressure

2 1/2" & 5" available - Price on Request

**figure 206 - 2000 psi cwp* - 3000 psi test
union with O'Ring blue nut / gray subs
butt weld schedule 80**

		PART NUMBER	WEIGHT POUNDS	CARTON QUANTITY	PRICE
2"	UNION	260220	6.2	15	245.18
	NUT	260293	3.107		30.84
	MALE SUB WITH O-RING	260224	1.5		116.90
	FEMALE SUB	020222	1.6		142.90
	O-RING	260294	0.15		5.93
2 1/2"	UNION	262520	11.4	6	315.74
	NUT	262593	5.8		94.28
	MALE SUB WITH O-RING	262524	2.6		-
	FEMALE SUB	022522	2.9		795.60
	O-RING	262594	0.15		6.14
3"	UNION	260320	15.3	6	387.76
	NUT	260393	6.7		77.22
	MALE SUB WITH O-RING	260324	4.1		157.61
	FEMALE SUB	020322	4.5		203.01
	O-RING	260394	0.2		5.93
4"	UNION	260420	20.9	4	520.47
	NUT	260493	7.4		200.36
	MALE SUB WITH O-RING	260424	6.5		178.88
	FEMALE SUB	020422	7		273.52
	O-RING	260494	0.2		5.93
6"	UNION	260620	52.6	1	1,251.33
	NUT	260693	18.3		324.32
	MALE SUB WITH O-RING	260624	16.3		538.30
	FEMALE SUB	020622	18		705.74
	O-RING	260694	0.25		17.21
8"	UNION	260820	77.3	1	1,932.16
	NUT	260893	22.6		422.03
	MALE SUB WITH O-RING	260824	25.2		878.23
	FEMALE SUB	020822	29.5		896.12
	O-RING	260894	0.25		23.71
10"	UNION	261020	117.8	1	2,364.28
	NUT	261093	33.3		826.80
	MALE SUB WITH O-RING	261024	42.4		780.21
	FEMALE SUB	021022	42		1,375.45
	O-RING	261094	0.3		33.23

2 1/2 " available - Price on Request



**figure 201 - 8 RND EUE - 3000 psi cwp* - 4500 psi test
union with O-Ring gold nut / gray subs**

		PART NUMBER	WEIGHT POUNDS	CARTON QUANTITY	PRICE
2"	UNION	210250	13.1	5	270.40
	NUT	022593	5.8		74.20
	MALE SUB	210251	3.5		89.23
	FEMALE SUB WITH O-RING	210255	4		104.10
	O'RING	2102594	0.15		1.87
2 1/2"	UNION	212550	19.4	5	288.44
	NUT	020393	6.7		77.22
	MALE SUB	212551	6		146.54
	FEMALE SUB WITH O-RING	212555	6.7		195.57
	O'RING	130394	0.2		6.60

*POR = Price On Request

**figure 211 - 2000 psi cwp* - 3000 psi test
insulated union threaded end gray nut / blue sub**

2"	UNION	110200	6.5	15	145.81
	NUT	110293	3.3		56.11
	MALE SUB	110201	1.3		48.10
	FEMALE SUB W / SEAL RING	110205	1.9		56.11
	REPAIR KITS	110299	0.25		40.46
3"	UNION	110300	13.3	6	281.11
	NUT	110393	6.7		109.04
	MALE SUB	110301	2.9		92.77
	FEMALE SUB W / SEAL RING	110305	3.6		116.90
	REPAIR KITS	110399	0.3		48.88

*cwp is cold working pressure

figure 207 - 2000 psi cwp* - 3000 psi test

blanking union threaded end blue cap / gray sub

		PART NUMBER	WEIGHT POUNDS	CARTON QUANTITY	PRICE
3"	UNION	270300	11.8	10	151.11
	BLANKING CAP W / O-RING	270397	7.8		116.17
	FEMALE SUB	020302	4.1		64.01
	O-RING	270394	0.2		5.93
4"	UNION	270400	17.8	6	223.81
	BLANKING CAP W / O-RING	270497	11.7		137.38
	FEMALE SUB	020402	6.3		109.88
	O-RING	120594	-		-
6"	UNION	270600	42.4	1	635.86
	BLANKING CAP W / O-RING	270697	26.7		286.42
	FEMALE SUB	020602	17.2		393.07
	O-RING	270694	0.25		16.43

butt weld schedule 40

3"	UNION	270310	12	10	210.13
	BLANKING CAP W / O-RING	270397	7.8		116.17
	FEMALE SUB	020312	4.1		179.45
	O-RING	270394	0.2		5.93
4"	UNION	270410	18.1	6	279.81
	BLANKING CAP W / O-RING	270497	11.7		137.38
	FEMALE SUB	020412	6.4		249.96
	O-RING	120594	0.2		9.52
6"	UNION	270610	42.8	1	706.37
	BLANKING CAP W / O-RING	270697	26.7		286.42
	FEMALE SUB	020612	16.1		680.99
	O-RING	270694	0.25		16.43

butt weld schedule 80

3"	UNION	270320	12.3	10	300.35
	BLANKING CAP W / O-RING	270397	7.8		116.17
	FEMALE SUB	020322	4.5		-
	O-RING	270394	0.2		5.93
4"	UNION	270420	18.7	6	306.85
	BLANKING CAP W / O-RING	270497	11.7		137.38
	FEMALE SUB	020422	7		273.52
	O-RING	120594	-		-
6"	UNION	270620	44.8	1	733.41
	BLANKING CAP W / O-RING	270697	26.7		286.42
	FEMALE SUB	020622	18		705.74
	O-RING	270694	0.25		16.43

figure 300 - 2000 psi cwp* - 3000 psi test

union with O'Ring threaded ends gray nut / yellow subs

		PART NUMBER	WEIGHT POUNDS	CARTON QUANTITY	PRICE
1"	UNION	030100	1.9	15	46.75
	NUT	030193	1.1		20.54
	MALE SUB	030101	0.3		18.62
	FEMALE SUB WITH O-RING	030105	0.4		24.13
	O-RING	030194	0.1		5.93
2"	UNION	030200	6.1	15	51.06
	NUT	030293	3		21.84
	MALE SUB	030201	1.5		20.02
	FEMALE SUB WITH O-RING	030205	1.7		25.22
	O-RING	030294	0.22		6.60

*cwp is cold working pressure

figure 400 - 4000 psi cwp* - 6000 psi test

threaded ends black nut / red subs

		PART NUMBER	WEIGHT POUNDS	CARTON QUANTITY	PRICE
2"	UNION	040200	10.8	10	116.69
	NUT	040293	4.8		68.59
	MALE SUB	040201	2.7		44.77
	FEMALE SUB	040202	3.2		62.71
3"	UNION	040300	18.8	4	299.52
	NUT	040393	6.6		115.28
	MALE SUB	040301	5.2		114.09
	FEMALE SUB	040302	6.9		141.91
4"	UNION	040400	30	3	301.13
	NUT	040493	10.1		141.80
	MALE SUB	040401	8.9		183.35
	FEMALE SUB	040402	11		215.23
*6"	UNION	040600	74.8	1	2,632.81
	NUT	040693	23.3		1,332.55
	MALE SUB	040601	23.7		895.13
	FEMALE SUB	040602	27.8		1,013.64
*12"	UNION	041200	167.5	1	3,017.66
	NUT	041293	56.7		2,696.93
	MALE SUB WITH O'RING	041204	52.2		1,347.37
	FEMALE SUB	041202	58.7		1,598.17
	O-RING	041294	0.4		46.59

*12" FIG 400 - 2,500 psi cwp - 3,750 psi test

5", 8" and 10" Unions are available - P.O.R.

butt weld schedule 80

*12"	UNION	041220	208.2	1	7,004.97
	NUT	041293	56.7		2,696.93
	MALE SUB WITH O'RING	041224	76.3		4,066.19
	FEMALE SUB	041222	74.6		4,823.94
	O-RING	041294	0.4		46.59

*12" FIG 400 BW 80 - 2,500 psi cwp - 3,750 psi test

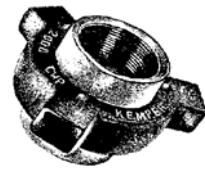


figure 402 - 4000 psi cwp* - 6000 psi test

union with seal ring threaded ends black nut / black subs

		PART NUMBER	WEIGHT POUNDS	CARTON QUANTITY	PRICE
2"	UNION	420200	10.4	10	155.74
	NUT	420293	4.8		66.82
	MALE SUB	420201	2.8		62.61
	FEMALE SUB W/ SEAL RING	420205	3		79.20
	SEAL RING	620295	0.1		6.97

*cwp is cold working pressure

P.O.R. = Price on Request

figure 600 - 6000 psi cwp* - 9000 psi test

union w/ bronze seat threaded ends black nut / silver subs

		PART NUMBER	WEIGHT POUNDS	CARTON QUANTITY	PRICE
1"	UNION	060100	3.6	20	170.35
	NUT	060193	1.75		80.13
	MALE SUB	060101	0.7		56.21
	FEMALE SUB W/ BRONZE SEAT	060106	1.2		101.35
	BRONZE SEAT INSERT	060196	0.05		37.08
1 1/4"	UNION	061200	-	10	-
	NUT	621593	4.642		100.83
	MALE SUB	061201	-		-
	FEMALE SUB W/ BRONZE SEAT	061206	-		-
	BRONZE SEAT INSERT	061596	0.1		52.31
1 1/2"	UNION	061500	9.2	10	244.66
	NUT	621593	4.642		100.83
	MALE SUB	061501	2		80.76
	FEMALE SUB W/ BRONZE SEAT	061506	2.7		135.82
	BRONZE SEAT INSERT	061596	-		-
2"	UNION	060200	16.6	7	269.31
	NUT	060293	8.2		112.16
	MALE SUB	060201	3.4		88.87
	FEMALE SUB W/ BRONZE SEAT	060206	5.1		150.54
	BRONZE SEAT INSERT	060296	0.6		57.20
4"	UNION	060400	38.5	2	786.14
	NUT	060493	14		231.50
	MALE SUB	060401	11.5		234.05
	FEMALE SUB W/ BRONZE SEAT	060406	13		299.05
	BRONZE SEAT INSERT	060496	0.2		85.50

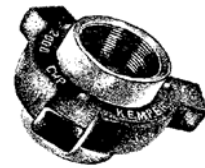
*cwp is cold working pressure



figure 602 - 6000 psi cwp* - 9000 psi test
union w/ seal ring threaded ends black nut / orange subs

		PART NUMBER	WEIGHT POUNDS	CARTON QUANTITY	PRICE
1"	UNION	620100	3.6	20	88.04
	NUT	620193	1.8		45.97
	MALE SUB	620101	0.7		29.07
	FEMALE SUB W/ SEAL RING	620105	1.1		40.04
	SEAL RING	620195	0.1		5.56
1 1/4"	UNION	621200	9.9	10	185.95
	NUT	621593	4.642		100.83
	MALE SUB	621201	2.4		68.22
	FEMALE SUB W/ SEAL RING	621205	2.9		99.84
	SEAL RING	621595	0.1		7.85
1 1/2"	UNION	621500	9.1	10	185.95
	NUT	621593	4.642		100.83
	MALE SUB	621501	2		68.22
	FEMALE SUB W/ SEAL RING	621505	2.5		99.84
	SEAL RING	621595	0.1		7.85
2"	UNION	620200	14.2	7	172.64
	NUT	620293	7.319		79.20
	MALE SUB	620201	2.9		63.91
	FEMALE SUB W/ SEAL RING	620205	3.9		92.56
	SEAL RING	620295	0.1		6.97
3"	UNION	620300	22.7	4	299.36
	NUT	620393	10.6		122.56
	MALE SUB	620301	5.2		113.88
	FEMALE SUB W/ SEAL RING	620305	6.9		146.12
	SEAL RING	620395	0.11		10.04
4"	UNION	620400	35.5	2	475.59
	NUT	620493	15.5		183.09
	MALE SUB	620401	8.9		179.87
	FEMALE SUB W/ SEAL RING	620405	11.1		258.96
	SEAL RING	620495	0.15		10.92

*cwp is cold working pressure



**figure 602 - 6000 psi cwp* - 9000 psi test
union w/ seal ring
butt weld schedule 80**

		PART NUMBER	WEIGHT POUNDS	CARTON QUANTITY	PRICE
1"	UNION	620120	3.6	20	105.04
	NUT	620193	1.8		45.97
	MALE SUB	620121	0.8		40.77
	FEMALE SUB W/ SEAL RING	620125	1.25		61.78
	SEAL RING	620195	0.1		5.56
1 1/4"	UNION	621220	9.3	10	223.91
	NUT	621593	4.642		100.83
	MALE SUB	621221	2.18		106.44
	FEMALE SUB W/ SEAL RING	621225	3		155.01
	SEAL RING	621595	0.1		7.85
1 1/2"	UNION	621520	9.1	10	223.91
	NUT	621593	4.642		100.83
	MALE SUB	621521	2.1		106.44
	FEMALE SUB W/ SEAL RING	621525	2.75		155.01
	SEAL RING	621595	0.1		7.85
2"	UNION	620220	13.9	7	239.88
	NUT	620293	7.319		79.20
	MALE SUB	620221	2.7		107.54
	FEMALE SUB W/ SEAL RING	620225	3.5		156.83
	SEAL RING	620295	0.1		6.97
3"	UNION	620320	22.5	4	342.11
	NUT	620393	10.6		122.56
	MALE SUB	620321	5.9		141.91
	FEMALE SUB W/ SEAL RING	620325	6.25		186.26
	SEAL RING	620395	0.11		10.04
4"	UNION	620420	31.5	2	537.21
	NUT	620493	15.5		183.09
	MALE SUB	620421	7.6		212.99
	FEMALE SUB W/ SEAL RING	620425	8.3		296.56
	SEAL RING	620495	0.15		10.92

*cwp is cold working pressure



**figure 602 - 6000 psi cwp* - 9000 psi test
union w/ seal ring
butt weld schedule 160 and butt weld xxh**

		PART NUMBER AND WEIGHT (LBS.)				CARTON QTY.	PRICE
		BW 160		BW XXH			
1"	UNION	620130	3.7	620140	3.9	20	227.14
	NUT	620193	1.8	620193	1.8		45.97
	MALE SUB	620131	0.8	620141	0.9		90.74
	FEMALE SUB W/ S.R.	620135	1.2	620145	1.25		131.98
	SEAL RING	620195	0.1	620195	0.1		5.56
1 1/2"	UNION	621530	9.5	621540	9.9	10	313.14
	NUT	621593	4.642	621593	4.642		100.83
	MALE SUB	621531	2.3	621541	2.5		139.83
	FEMALE SUB W/ S.R.	621535	2.8	621545	2.75		204.31
	SEAL RING	621595	0.1	621595	0.1		7.85
2"	UNION	620230	14.108	620240	15.1	7	399.20
	NUT	620293	7.319	620293	7.319		79.20
	MALE SUB	620231	3.1	620241	3.4		178.57
	FEMALE SUB W/ S.R.	620235	3.7	620245	3.9		260.10
	SEAL RING	620295	0.1	620295	0.1		6.97
3"	UNION	620330	23.8	620340	24.9	4	552.81
	NUT	620393	10.6	620393	10.6		122.56
	MALE SUB	620331	6.7	620341	7.4		229.94
	FEMALE SUB W/ S.R.	620335	6.5	620345	6.85		301.34
	SEAL RING	620395	0.11	620395	0.11		10.04
4"	UNION	620430	33.8	620440	34.9	2	720.25
	NUT	620493	15.5	620493	15.5		183.09
	MALE SUB	620431	9	620441	9.7		285.12
	FEMALE SUB W/ S.R.	620435	9.3	620445	9.7		397.28
	SEAL RING	620495	0.15	620495	0.15		10.92

*cwp is cold working pressure

figure 1002 - 10,000 psi cwp* - 15,000 psi test
union w/ seal ring threaded ends red nut / blue subs

		PART NUMBER	WEIGHT POUNDS	CARTON QUANTITY	PRICE
1"	UNION	120100	3.6	20	149.71
	NUT	120193	1.8		74.83
	MALE SUB	120101	0.7		49.40
	FEMALE SUB W/ SEAL RING	120105	1.1		61.10
	SEAL RING	620195	0.1		5.56
1 1/2"	UNION	121500	9.104	10	251.16
	NUT	121593	4.6		96.67
	MALE SUB	121501	2		82.89
	FEMALE SUB W/ SEAL RING	121505	2.5		176.85
	SEAL RING	621595	0.1		7.85
2"	UNION	120200	13.4	7	200.98
	NUT	120293	7.4		143.10
	MALE SUB	120201	2.8		66.30
	FEMALE SUB W/ SEAL RING	120205	3.1		94.85
	SEAL RING	620295	0.1		6.97
3"	UNION	120300	22.7	4	340.81
	NUT	120393	10.7		168.06
	MALE SUB	120301	5.2		121.99
	FEMALE SUB W/ SEAL RING	120305	6.9		179.76
	SEAL RING	620395	0.11		10.04
4"	UNION	120400	35.5	2	489.94
	NUT	120493	15.6		250.54
	MALE SUB	120401	8.9		200.41
	FEMALE SUB W/ SEAL RING	120405	11		264.11
	SEAL RING	620495	0.15		10.92
* 5"	UNION	120500	73.457	1	1,786.56
	NUT	120593	26.6		660.30
	MALE SUB W/ O-RING	120504	23.3		731.48
	FEMALE SUB	120502	23.6		964.44
	O'RING	120594	0.2		9.52

5" fig 1002 - 5,000 psi cwp - 7,500 psi test

*cwp is cold working pressure

figure 1002 - 10,000 psi cwp* - 15,000 psi test

union w/ seal ring

butt weld schedule 160 and butt weld xxh

		PART NUMBER AND WEIGHT (LBS.)				CARTON	PRICE
		BW 160		BW XXH		QTY.	
2"	UNION	120230	14.2	120240	14.6	7	371.64
	NUT	120293	7.4	120293	7.4		143.10
	MALE SUB	120231	3.1	120241	3.4		147.73
	FEMALE SUB W/ S.R.	120235	3.6	120245	3.8		214.71
	SEAL RING	620295	0.1	620295	0.1		6.97
3"	UNION	120330	23.8	120340	24.9	4	436.54
	NUT	120393	10.7	120393	10.7		168.06
	MALE SUB	120331	6.7	120341	7.4		168.74
	FEMALE SUB W/ S.R.	120335	6.4	120345	6.8		254.18
	SEAL RING	620395	0.11	620395	0.11		10.04
4"	UNION	120430	34.025	120440	34.9	2	650.68
	NUT	120493	15.6	120493	15.6		250.54
	MALE SUB	120431	9	120441	9.7		295.15
	FEMALE SUB W/ S.R.	120435	9.2	120445	9.6		381.68
	SEAL RING	620495	0.15	620495	0.15		10.92
*5"	UNION	120530	55.4	120540	57.5	1	1,456.05
	NUT	120593	26.6	120593	26.6		660.30
	MALE SUB W/ O-RING	120534	14	120544	15.4		487.81
	FEMALE SUB	120532	14.8	120542	15.6		560.56
	O-RING	120594	0.2	120594	0.2		9.52
*6"	UNION	120630	90.9	120640	94.6	1	1,680.80
	NUT	120693	41.5	120693	41.5		806.88
	MALE SUB W/ O-RING	120634	22.7	120644	24.9		554.68
	FEMALE SUB	120632	26.7	120642	28.1		647.09
	O-RING	120694	0.18	120694	0.18		21.01

*5" and *6" fig 1002 - 7,500 psi cwp* - 11,250 psi test

combination ends

			WEIGHT		QTY.	
*5" x 4"	UNION 4" NPT BOTH ENDS	125400	63.9		1	1,699.20
	MALE SUB	125401	17.3			705.85
	FEMALE 4" SC	125402	20			747.92
	NUT	120593	26.6			660.30
*5" x 4"		BW 160		BW XXH	QTY.	
	UNION 5" 160 or XXH x 4" SC	125450	60.6	125440	1	1,648.14
	MALE 5" BW 160 / XXH W/ O-RING	120534	14	120544		487.81
	FEMALE 4" SC	125402	20	125402		747.92
*4" x 5"	NUT	120593	26.6	120593		660.30
	UNION 4" SC x 5" 160 or XXH	124560	59.4	124540	1	1,648.14
	MALE 4" SC W/ O-RING	125401	17.3	125401		705.85
	FEMALE 5" BW 160 / XXH	120532	14.8	120542		560.56
	NUT	120593	26.6	120593		660.30

Page 16 *combination ends - 7,500 psi cwp* - 11,250 psi test

*cwp is cold working pressure

figure 1003

3" - 10,000 psi cwp* - 15,000 psi test

4", 5", 6" - 7,500 cwp* - 11,250 psi test

misaligning union w/ o'ring

threaded ends

black nut / green subs

		PART NUMBER	WEIGHT POUNDS	CARTON QUANTITY	PRICE
3"	UNION	130300	46.2	2	784.37
	NUT	130393	22.6		376.48
	MALE SUB W/ O-RING	130304	14		317.77
	FEMALE SUB	130302	9.3		301.96
	O'RING	130394	0.2		6.60
4"	UNION	130400	76.5	1	938.18
	NUT	130493	37.7		740.58
	MALE SUB W/ O-RING	130404	22.8		386.05
	FEMALE SUB	130402	16.1		361.19
	O'RING	130494	0.2		7.90

butt weld schedule 160 / butt weld xxh

		PART NUMBER AND WEIGHT (LBS.)				
		BW 160		BW XXH		
3"	UNION	130330	48.1	130340	49.6	902.25
	NUT	130393	22.6	130393	22.6	376.48
	MALE SUB W/ O.R.	130334	15.8	130344	17	395.77
	FEMALE SUB	130332	9.4	130342	9.7	354.74
	O'RING	130394	0.2	130394	0.2	6.60
4"	UNION	130430	77.7	130440	78.7	1,153.00
	NUT	130493	37.7	130493	37.7	740.58
	MALE SUB W/ O.R.	130434	23.5	130444	24.1	492.13
	FEMALE SUB	130432	16.4	130442	16.9	446.94
	O'RING	130494	0.2	130494	0.2	7.90
5"	UNION	130530	78.3	130540	79	1,989.73
	NUT	130593	37.7	130593	37.7	766.06
	MALE SUB W/ O.R.	130534	23.1	130544	23.5	814.89
	FEMALE SUB	130532	17.5	130542	17.9	766.06
	O'RING	130494	0.2	130494	0.2	7.90
6"	UNION	130630	-	130640	179.3	3,580.30
	NUT	130693	103	130693	103	1,856.45
	MALE SUB W/ O.R.	130634	-	130644	45.9	1,624.48
	FEMALE SUB	130632	-	130642	29	1,458.76
	O'RING	130694	0.25	130694	0.25	7.90

*cwp is cold working pressure

figure 1502 - 15,000 psi cwp* - 22,500 psi test
union w/ seal ring threaded ends blue nut / red subs

		PART NUMBER	WEIGHT POUNDS	CARTON QUANTITY	PRICE
1"	UNION	150100	8.7	9	224.54
	NUT	150193	4.6		151.22
	MALE SUB	150101	1.8		113.57
	FEMALE SUB W/ SEAL RING	150105	2.3		142.43
	SEAL RING	620195	0.1		5.56
1 1/2"	UNION	151500	18.3	5	498.52
	NUT	151593	10.4		203.58
	MALE SUB	151501	3.7		164.53
	FEMALE SUB W/ SEAL RING	151505	4.2		253.66
	SEAL RING	621595	0.1		7.85
2"	UNION	150200	19.5	5	221.62
	NUT	150293	8.9		93.11
	MALE SUB	150201	5.2		83.93
	FEMALE SUB W/ SEAL RING	150205	5.4		112.58
	SEAL RING	620295	0.1		6.97
3"	UNION	150300	31.8	4	534.30
	NUT	150393	14.3		281.88
	MALE SUB	150301	8.5		189.49
	FEMALE SUB W/ SEAL RING	150305	9		228.75
	SEAL RING	620395	0.11		10.04

figure 1502 - 15,000 psi cwp* - 22,500 psi test
non-pressure seal union w/ seal ring
blue nut / light red subs

4"	UNION	150470	-	2	-
	NUT	150493	35.2		591.49
	MALE SUB	150471	14.9		666.74
	FEMALE SUB W/ SEAL RING	150475	10		777.87
	SEAL RING	150495	0.1		84.60

*cwp is cold working pressure

* POR = Price On Request



**figure 1502 - 15,000 psi cwp* - 22,500 psi test
union w/ seal ring**

butt weld schedule 160 and butt weld xxh

		PART NUMBER AND WEIGHT (LBS.)				CARTON QTY.	PRICE
		BW 160		BW XXH			
1"	UNION	150130	8.4	150140	8.6	9	587.76
	NUT	150193	4.6	150193	8.9		151.22
	MALE SUB	150131	1.7	150141	1.8		250.95
	FEMALE SUB W/ S.R.	150135	2.2	150145	2.2		250.95
	SEAL RING	620195	0.1	620195	0.1		5.56
1 1/2"	UNION	151530	18	151540	18.5	5	531.08
	NUT	151593	10.4	151593	10.4		203.58
	MALE SUB	151531	3.7	151541	3.9		201.60
	FEMALE SUB W/ S.R.	151535	4	151545	4.2		288.24
	SEAL RING	621595	0.1	621595	0.1		24.34
2"	UNION	150230	19.2	150240	19.9	5	313.25
	NUT	150293	8.9	150293	8.9		93.11
	MALE SUB	150231	5.1	150241	5.4		138.53
	FEMALE SUB W/ S.R.	150235	5.4	150245	5.6		184.76
	SEAL RING	620295	0.1	620295	0.1		6.97
3"	UNION	150330	27.6	150340	28.7	4	610.01
	NUT	150393	14.3	150393	14.3		281.88
	MALE SUB	150331	6.692	150341	7.5		228.75
	FEMALE SUB W/ S.R.	150335	6.5	150345	7.4		350.01
	SEAL RING	620395	0.11	620395	0.11		10.04
4"	UNION	150430	79.9	150440	83.4	1	2,089.78
	MALE SUB	150431	21.1	150441	23.1		1,109.16
	FEMALE SUB W/ S.R.	150435	20.6	150445	22		1,514.34
	NUT COMPLETE	150494	38.5	150494	38.5		1,152.79
	SEAL RING	150495	0.1	150495	0.1		84.60
	RETAINING RING	150496	-	150496	-		-
	SEGMENT RING	150497	2.9	150497	2.9		512.94
5"	UNION	N/A		150540	93.9	1	3,602.82
	NUT			150593	45.7		1,729.16
	MALE SUB			150541	24.7		1,188.93
	FEMALE SUB W/ S.R.			150545	23.6		1,582.62
	SEAL RING			150495	0.1		84.60

*cwp is cold working pressure

figure 2002 - 20,000 psi cwp* - 30,000 psi test
butt weld green nut / gray subs

		PART NUMBER	WEIGHT POUNDS	CARTON QUANTITY	PRICE
2"	UNION	200290	21.65	4	665.08
	NUT COMPLETE	200293	12.4		301.13
	MALE SUB	200291	-		-
	FEMALE SUB W/ SEAL RING	200295	-		-
	SEAL RING	200296	0.15		125.79
	RETAINING RING	9990056	0.1		10.61
	SEGMENTED RING	999001	0.7		198.90

figure "G" - 6000 psi cwp* - 9000 psi test
union w/ seal ring threaded ends yellow nut / silver subs

1 1/2"	UNION	G61500	6.9	10	163.23
	NUT	G61593	3.1		90.84
	MALE SUB	G61501	1.5		73.53
	FEMALE SUB WITH SEAL RING	G61505	2.3		106.08
	SEAL RING	G61595	0.2		9.52
2"	UNION	G60200	11.2	7	186.26
	NUT	G60293	4.2		103.53
	MALE SUB	G60201	2.7		83.62
	FEMALE SUB WITH SEAL RING	G60205	4.4		131.98
	SEAL RING	G60295	0.3		12.90

viton seals rings for H2S service
(highly saturated nitrile seal rings available upon request)

				PRICE
1"	SEAL RING	V620195	0.1	44.30
1 1/2"	SEAL RING	V621595	0.1	87.05
2"	SEAL RING	V620295	0.15	75.71
3"	SEAL RING	V620395	0.1	108.58
4"	SEAL RING	V620495	0.2	176.54

viton o'rings

5"	O-RING	V120594	0.2	22.88
6"	O-RING	V120694	0.25	73.84

*cwp is cold working pressure